



HS SERIES COAXIAL ARRAY SPEAKERS



***TOA presents yet another innovation in sound:
The Coaxial Tweeter Array with
large-diameter woofer.***

Sound that brings forth an emotional response.

Cost-effective mid-size speaker system that high quality sound no matter what the applic



One of the most difficult speaker requirements to satisfy is a cost-effective mid-size speaker system that offers high quality sound no matter what the application. TOA HS Series speakers are equipped with narrow-directivity control (90° horizontal × 40° vertical). This useful feature allows tailoring the speaker's dispersion characteristics to better suit the acoustic environment in which it is installed.

The versatile HS-1200/1500 Series are compatible for use with 100V/70V lines for distributed applications. The HS Series speakers are exceptional in offering useful features at an attractive price.

Large diameter woofer (12"/15") in a compact, lightweight enclosure

With its compact dimensions and light weight, the HS Series proves ideal for use in mid to small-size venues, including restaurants and pubs, conference rooms and lecture halls, schools and similar locations, as well as for temporary installations.

Uniform high quality sound

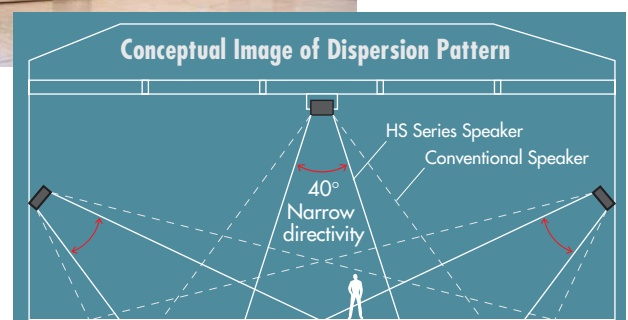
is made possible by mounting the high frequency driver array in a coaxial configuration with the woofer.

- Extended bass frequencies for rich music reproduction
- Optimal sound delivery with well integrated low and high frequencies



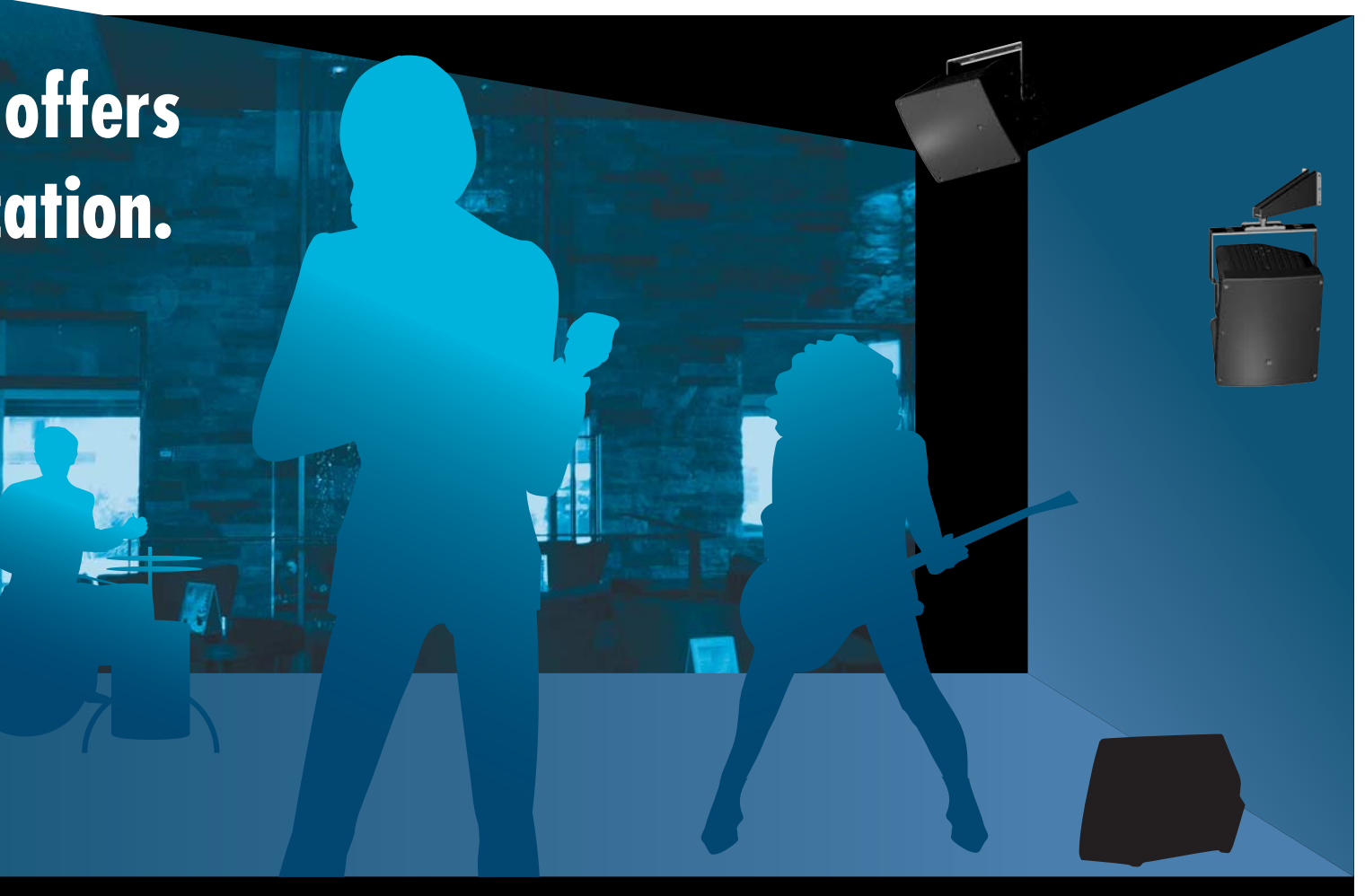
Optimal choice for acoustical problems caused by high ceilings

that tend to reduce the clarity of sound reproduction, such as in sports facilities, multi-purpose halls and houses of worship.



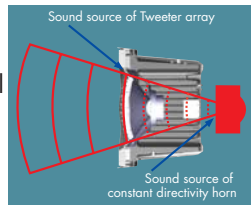
In locations with high ceilings, wide-directivity speakers cause the audio reaching the listeners to lose clarity due to overlapping of attenuated sounds.

offers
ation.



Coaxial Tweeter Array delivers accurate directivity control

HS Series speakers are equipped with narrow-directivity control (90° horizontal x 40° vertical). Well-balanced sound is delivered without treble attenuation to where the speaker is aimed, filling the acoustic space with clear sound.



Versatile installation

Unobtrusive design makes an ideal choice for permanent installations.



Optional dedicated mounting brackets facilitates speaker installs on walls and ceilings.

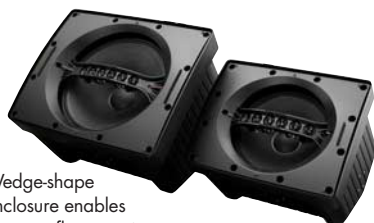
Accessory handle for easy transportability



Secure floor setting



Accessory rubber feet for straight positioning.



Wedge-shape enclosure enables use as a floor monitor.

Lineup:

12"/15" woofer, black and white finishes, low-impedance and high/low-impedance models are available.



Twin input terminal sets

The speakon terminal is ideal for quick temporary installation and for testing purposes. The screw terminals are recommended for long-term installation.



SPEAKER SYSTEM
1700081 HS-1500BT
IMPEDANCE: 8 Ω, 170, 320, 670 Ω
CONTIG PGM INPUT: 300W (8 Ω)
RATED POWER: 60W (100W, 70V)
TMA Corporation
MADE IN MEXICO

SPECIFICATIONS

Model No.	HS-120B	HS-120W	HS-1200BT	HS-1200WT
Enclosure			Sealed type	
Rated Power		Continuous pink noise: 100W, Continuous program: 300W		
Rated Impedance	8Ω		8Ω 100V line: 170Ω (60W), 330Ω (30W), 670Ω (15W) 70V line: 83Ω (60W), 170Ω (30W), 330Ω (15W), 670Ω (7.5W)	
Sensitivity		97dB (1W, 1m)		
Frequency Response	80 – 20,000Hz		70 – 20,000Hz	
Crossover Frequency		3kHz		
Directivity Angle		Horizontal: 90°, Vertical: 40°		
Speaker Component		Low frequency: 30cm (12") cone-type, High frequency: Balanced dome tweeter x 6		
Input Terminal		NEUTRIK NL4MP Speakon and M4 screw terminal, distance between barriers: 9mm		
Operating Temperature		-10°C to +50°C		
Finish	Enclosure: Polypropylene, black Punched net: Surface-treated steel plate, black	Enclosure: Polypropylene, white Punched net: Surface-treated steel plate, white	Enclosure: Polypropylene, black Punched net: Surface-treated steel plate, black	Enclosure: Polypropylene, white Punched net: Surface-treated steel plate, white
Dimensions		361 (W) x 448 (H) x 320 (D)mm		
Weight	8.5 kg		10 kg	
Accessories	Handle x 1, Handle fitting bracket x 2, Handle mounting screw x 2, Rubber foot x 2, Rubber foot mounting screw x 2			
Options	Mounting bracket: HY-1200VB (for vertical speaker mounting) HY-1200HB (for horizontal speaker mounting) Ceiling mount bracket: HY-C0801 Wall mount bracket: HY-W0801 Speaker stand: ST-33B	HY-1200WW (for vertical speaker mounting) HY-1200HW (for horizontal speaker mounting) HY-C0801W HY-W0801W ST-33B	HY-1200VB (for vertical speaker mounting) HY-1200HB (for horizontal speaker mounting) HY-C0801 HY-W0801 ST-33B	HY-1200WW (for vertical speaker mounting) HY-1200HW (for horizontal speaker mounting) HY-C0801W HY-W0801W ST-33B

Model No.	HS-150B	HS-150W	HS-1500BT	HS-1500WT
Enclosure			Sealed type	
Rated Power		Continuous pink noise: 100W, Continuous program: 300W		
Rated Impedance	8Ω		8Ω 100V line: 170Ω (60W), 330Ω (30W), 670Ω (15W) 70V line: 83Ω (60W), 170Ω (30W), 330Ω (15W), 670Ω (7.5W)	
Sensitivity		98dB (1W, 1m)		
Frequency Response	70 – 20,000Hz		60 – 20,000Hz	
Crossover Frequency		3kHz		
Directivity Angle		Horizontal: 90°, Vertical: 40°		
Speaker Component		Low frequency: 38cm (15") cone-type, High frequency: Balanced dome tweeter x 6		
Input Terminal		NEUTRIK NL4MP Speakon and M4 screw terminal, distance between barriers: 9mm		
Operating Temperature		-10°C to +50°C		
Finish	Enclosure: Polypropylene, black Punched net: Surface-treated steel plate, black	Enclosure: Polypropylene, white Punched net: Surface-treated steel plate, white	Enclosure: Polypropylene, black Punched net: Surface-treated steel plate, black	Enclosure: Polypropylene, white Punched net: Surface-treated steel plate, white
Dimensions		451 (W) x 560 (H) x 400 (D)mm		
Weight	12 kg		14 kg	
Accessories	Handle x 1, Handle fitting bracket x 2, Handle mounting screw x 2, Rubber foot x 2, Rubber foot mounting screw x 2			
Options	Mounting bracket: HY-1500VB (for vertical speaker mounting) HY-1500HB (for horizontal speaker mounting) Ceiling mount bracket: HY-C0801 Wall mount bracket: HY-W0801 Speaker stand: ST-33B	HY-1500WW (for vertical speaker mounting) HY-1500HW (for horizontal speaker mounting) HY-C0801W HY-W0801W ST-33B	HY-1500VB (for vertical speaker mounting) HY-1500HB (for horizontal speaker mounting) HY-C0801 HY-W0801 ST-33B	HY-1500WW (for vertical speaker mounting) HY-1500HW (for horizontal speaker mounting) HY-C0801W HY-W0801W ST-33B

Optional Brackets

For wall/ceiling mount



For ceiling mount



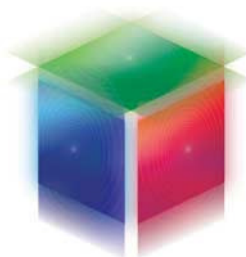
For wall mount



Speaker Stand



*To be used in conjunction with HY-1200/1500 Series brackets.



Human Society with
Sound & Communication

Dovoz, distribuce a prodej v ČR:
AUDIO DIGITAL s.r.o.
www.audiodigital.cz

TOA Corporation
www.toa.jp

Specifications are subject to change without notice.
Printed in Japan (0801) 833-61-653-70 u