

The BS-678BSW is certified according to the European Standard EN 54-24: 2008, the International Standard ISO 7240-24: 2010 and in compliance with the British Standard BS 5839-8: 2008 14.8. Certification number is 0359-CPD-0103.

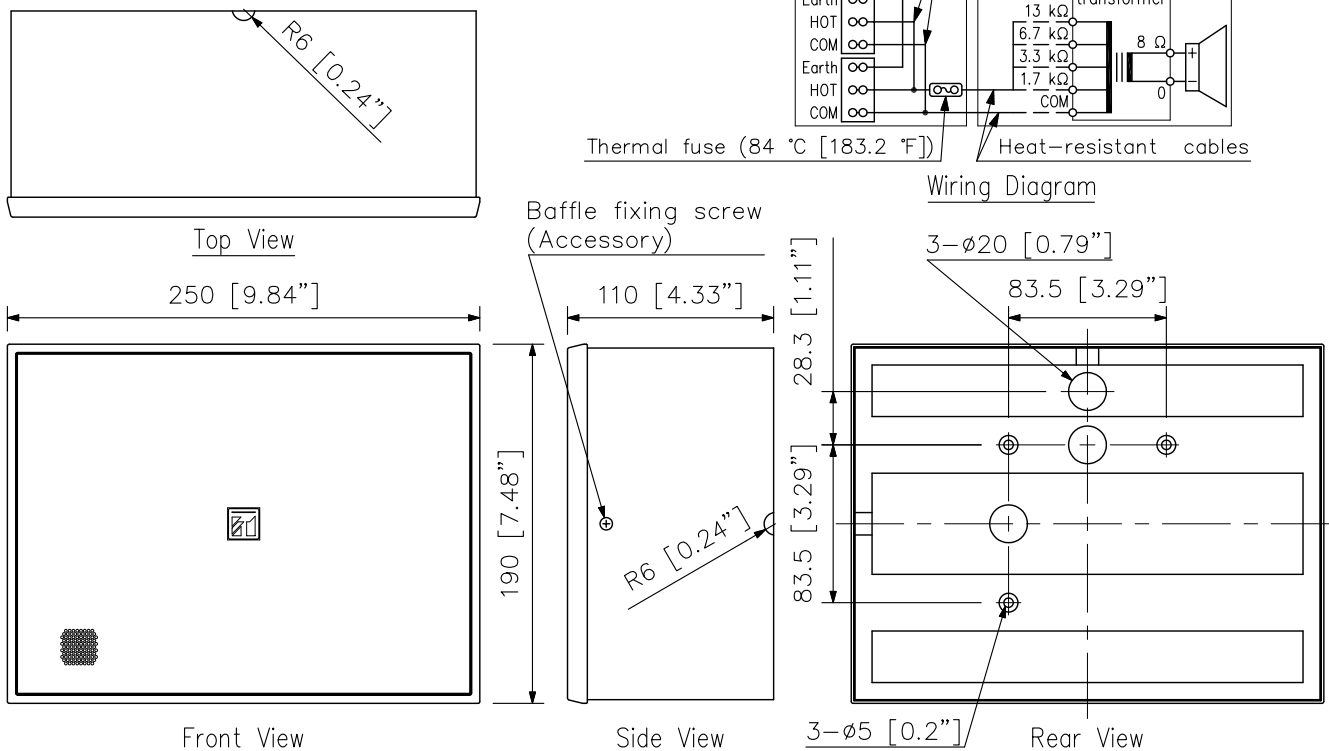
DESCRIPTION

The BS-678BSW is the voice alarm certification product. The BS-678BSW is suitable for announcement and music use in high quality sound cone speaker. Either concealed in-wall wiring or open wiring can be used for speaker cable connection. The speaker structure that permits direct wall-mounting with screws prevents the speaker from falling easily even if an outward force is applied to. The input impedance can be easily changed by changing the tap position of the transformer.

SPECIFICATIONS

Rated Input	6 W (100 V line), 3 W (70 V line)
Rated Impedance	100 V line: 1.7 kΩ (6 W), 3.3 kΩ (3 W), 6.7 kΩ (1.5 W), 13 kΩ (0.8 W) 70 V line: 1.7 kΩ (3 W), 3.3 kΩ (1.5 W), 6.7 kΩ (0.8 W), 13 kΩ (0.4 W)
Sensitivity	94 dB (1 W, 1 m) (500 Hz - 5 kHz, pink noise) 92 dB (1 W, 1 m) (100 Hz - 10 kHz, pink noise) 80 dB (1 W, 4 m) (100 Hz - 10 kHz, pink noise)
Maximum Sound Pressure Level	98 dB (6 W, 1 m) (100 Hz - 10 kHz, pink noise) 86 dB (6 W, 4 m) (100 Hz - 10 kHz, pink noise)
Frequency Response	150 Hz - 18 kHz (sensitivity -20 dB)
Coverage Angle	Horizontal: 360° (500 Hz), 135° (1 kHz), 130° (2 kHz), 70° (4 kHz) Vertical: 330° (500 Hz), 160° (1 kHz), 135° (2 kHz), 70° (4 kHz)
Environmental Type	A (indoor applications)
Speaker Component	16 cm (6") cone-type
Operating Temperature	-10 °C to +50 °C (14 °F to 122 °F)
Speaker Mounting Method	Wall-mount
Applicable Cable	Conductor: Solid wire or 7-core wire 0.8 - 7 mm ² (AWG18-AWG9) for solid wire, 0.8 - 4 mm ² (AWG18-AWG11) for 7-core wire
Connection	Screw connector (steatite terminal × 2) bridging
Finish	Baffle: HIPS resin, white (RAL 9010 or equivalent color) Cabinet: Particle board with pvc sheet, white (RAL 9010 or equivalent color) Grille: Surface-treated steel plate net, white (RAL 9010 or equivalent color), paint
Dimensions	250 (W) × 190 (H) × 110 (D) mm (9.84" × 7.48" × 4.33")
Weight	1.7 kg (3.75 lb)
Accessory	Speaker mounting screw×2, Baffle fixing screw×2

APPEARANCE



UNIT:mm SCALE:1/4